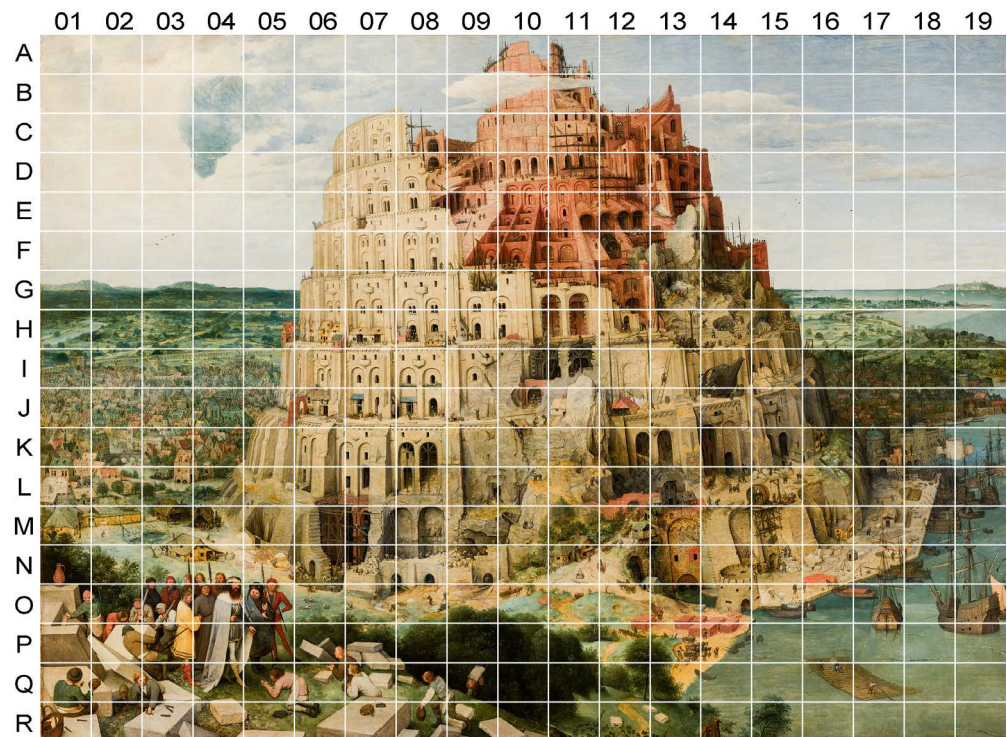


# PROJECT BABEL

## List of Artists



Download this list



3.-31. AUGUST 2024



www.gallerivaldal.dk

# PROJECT BABEL

## International Printmaking Collaboration

Project Babel is an international printmaking collaboration project, initiated by four graphic artists at **Ratamo Printmaking and Photography Centre** in Jyväskylä, Finland.

In 2022, *Anni Huttu, Kaisa Koljonen, Maria Pihl* and *Naoji Ishiyama* asked colleagues all over the world to participate. 329 artists representing 40 studios in 19 countries agreed to take part in the project. Each artist created an original print based on a segment of the iconic painting "The Great Tower of Babel" (1563) by Pieter Bruegel the Elder. All segments are gathered in the final work, consisting of a total of 342 segments, measuring approximately 245×335 cm.

Project Babel premiered in Jyväskylä in December 2023 and has been shown in Lincoln, Nebraska, USA. Galleri Valdal's is the only showing of this unique collaborative work in Denmark.

### Exhibition is open:

3–31 August 2024, Thursdays+Fridays 2pm–6pm,  
Saturdays 11am–2pm, or by appointment.



### Galleri Valdal

Bykildevej 8, kld. th.  
DK-2500 Valby, Denmark  
[www.gallerivaldal.dk](http://www.gallerivaldal.dk)  
[kontakt@gallerivaldal.dk](mailto:kontakt@gallerivaldal.dk)  
Tlf. (+45) 30 53 87 14

In cooperation with

### TEAM BABEL



# PROJECT BABEL

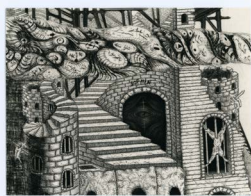
No. – Studio – Artist's name



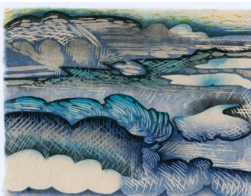
**A09**



**A10**



**B11**



**B15**

- A01** – Atelier de l'Île – Paul Ballard
- A02** – Leinster Printmaking Studio – Jane Ellis
- A03** – Slaughterhaus Print Studio – Ziqi Xu
- A04** – Atelier de l'Île – Claire Brunet
- A05** – Leinster Printmaking Studio – Frank Rafter
- A06** – Oxford Printmakers Co-operative – David Barron
- A07** – Fyns Grafiske Værksted – Annemette Heltoft
- A08** – Fyns Grafiske Værksted – Carsten Frederiksen
- A09** – Ratamo Printmaking Centre – Maria Pihl
- A10** – Ratamo Printmaking Centre – Naoji Ishiyama
- A11** – Lahden Taidegraafikot ry – Antti Salokannel
- A12** – Oxford Printmakers Co-operative – Felicity Cormack
- A13** – Slaughterhaus Print Studio – Michelle Avison
- A14** – Blank
- A15** – Tolstrup Pryds Grafisk – Espen Brandt-Møller
- A16** – Slaughterhaus Print Studio – James Anderson
- A17** – Ratamo Printmaking Centre – Nina Huisman
- A18** – Helsinki Litho – Roma Auskalnyte
- A19** – Edinburgh Printmakers Print Studio – Lindy Furby

- B01** – Helsinki Litho – Kalle Berg
- B02** – Galleria Taller Gravura – Paco Aguilar
- B03** – Leinster Printmaking Studio – Eileen Keane
- B04** – Fyns Grafiske Værksted – Katja Tang-Petersen
- B05** – Tolstrup Pryds Grafisk – Allan Axelsen
- B06** – Fyns Grafiske Værksted – Dorthe Blom Madsen
- B07** – Slaughterhaus – Monica Vazquez
- B08** – Clifton Editions – Marie Walker
- B09** – Studio Iram – Rabia Khurshid
- B10** – Slaughterhaus Print Studio – Chris Christodoulou
- B11** – Ratamo Printmaking Centre – Kaisa Koljonen
- B12** – John Howard Print Studios – Becky Haughton
- B13** – Oxford Printmakers Co-operative – Ann Spencer
- B14** – Spike Print Studio – Jude Maguire
- B15** – Constellation Studios – Karen Kunc
- B16** – Estudio Fabiola Gil – Mar Gascón Artal
- B17** – Tolstrup Pryds Grafisk – Christie Munck
- B18** – Tolstrup Pryds Grafisk – Lars Pryds
- B19** – Estudio Fabiola Gil – Lola Manjón González

3.-31. AUGUST 2024



[www.gallerivaldal.dk](http://www.gallerivaldal.dk)

# PROJECT BABEL

No. – Studio – Artist's name



**C01**

- C01** – Korsør Grafiske Værksted – Helle Petersen
- C02** – Australian Print Workshop – Jennifer Marshall
- C03** – John Howard Print Studios – Jason Lilley
- C04** – Fyns Grafiske Værksted – Helle Bjørnebo Neidhardt
- C05** – Atelier de l'Île – Louise Ladouceur
- C06** – Oxford Printmakers Co-operative – Elizabeth Piggott
- C07** – Fyns Grafiske Værksted – Martin Askholm
- C08** – Blank



**C09**

- C09** – Atelier de l'Île – Claudette Domingue
- C10** – Fyns Grafiske Værksted – Teresa Larsen
- C11** – Studio Iram – Summaiya Khan
- C12** – Slaughterhaus Print Studio – Boris Kwok
- C13** – Matriz Associação de Gravura do Porto – Evandro Renan
- C14** – Atelier de l'Île – Christine Rolland
- C15** – Ratamo Printmaking Centre – Henna Lehtoaho
- C16** – Korsør Grafiske Værksted – Susanne Thea
- C17** – Ratamo Printmaking Centre – Aura Kotkavirta
- C18** – Água-Forte Printmaking Association – Catarina Longa Freire
- C19** – Fyns Grafiske Værksted – Anna Siek



**D07**

- D01** – Atelier ACHI – Shohei Uchida
- D02** – Leinster Printmaking Studio – Nuala O'Dea
- D03** – Fyns Grafiske Værksted – Christina Simon
- D04** – Ålgården Borås – Christina France
- D05** – Edinburgh Printmakers Print Studio – Ursula Pretsch
- D06** – Studio Shopen – Liav Shopen



**D13**

- D07** – Oxford Printmakers Co-operative – Sally Levell
- D08** – Printstudio Foundation VR – Robroeks Mieke
- D09** – Fyns Grafiske Værksted – Birgitte Rubæk
- D10** – Centre Culturel le Bief – Ben Quêne
- D11** – Printstudio Foundation VR – Rooms Veerle
- D12** – Studio Marstähti – Irma Tonteri
- D13** – Ålgården Borås – Lena Waldau
- D14** – Ålgården Borås – Anna Mattsson
- D15** – Printstudio Foundation VR – Van Goethem Lana
- D16** – Lahden Taidegraafikot ry – Jouni Salonen
- D17** – Lahden Taidegraafikot ry – Ihana Havo
- D18** – Edinburgh Printmakers Print Studio – Yasmeen Khan
- D19** – Fyns Grafiske Værksted – Gert Ejton

3.-31. AUGUST 2024



[www.gallerivaldal.dk](http://www.gallerivaldal.dk)

# PROJECT BABEL

No. – Studio – Artist's name



**E05**



**E10**



**F01**



**F14**

- E01** – Slaughterhaus – Jorge Andia
- E02** – Ratamo Printmaking Centre – Iana Vulpe
- E03** – Ratamo Printmaking Centre – Fernando García
- E04** – Atelier de l'Île – Suzanne FerlandL
- E05** – Spike Print Studio – Irena Czapska
- E06** – Studio Iram – Madiha Khan
- E07** – Atelier Achi – Makiko Kakiuchi
- E08** – Studio Shopen – Yael Moshe Kama
- E09** – Oxford Printmakers Co-operative – Jenny Lines
- E10** – Studio Iram – Sohaina Elia
- E11** – Constellation Studios – Kyle Nobels
- E12** – Edinburgh Printmakers Print Studio – Masha Tiplady
- E13** – Centre Culturel le Bief – Montaine Sanchez
- E14** – Galleria Taller Gravura – Caterina de Nisco
- E15** – Leinster Printmaking Studio – Burcu Dundar
- E16** – Ratamo Printmaking Centre – Tuukka Peltonen
- E17** – Printstudio Foundation VR – de Haan Hanna
- E18** – Studio Iram – Farah Faisal
- E19** – Oxford Printmakers Co-operative – Annemarie LePretre
  
- F01** – Lahden Taidegraafikot ry – Sirpa Pyykkö
- F02** – Studio Iram – Yashfa Raza
- F03** – Estudio Fabiola Gil – Juan Luis Gallego Porras
- F04** – Ratamo Printmaking Centre – Anni Huttu
- F05** – Spike Print Studio – Nicky Guest
- F06** – Blank
- F07** – Oxford Printmakers Co-operative – Jack Goozee
- F08** – Ratamo Printmaking Centre – Guy Langevin
- F09** – Oxford Printmakers Co-operative – Claire Drinkwater
- F10** – Blank
- F11** – Atelier de l'Île – Claudel Lacroix
- F12** – Studio Shopen – Rotem Bides
- F13** – Studio Piccolo – Emmi Sinkkonen
- F14** – Fyns Grafiske Værksted – Grethe Hald
- F15** – Água-Forte Printmaking Association – Teresa Pato
- F16** – Ratamo Printmaking Centre – Jyrki Markkanen
- F17** – Lahden Taidegraafikot ry – Minna Louhelainen
- F18** – Ratamo Printmaking Centre – Alexandra Schewski
- F19** – Blank

3.-31. AUGUST 2024



[www.gallerivaldal.dk](http://www.gallerivaldal.dk)

# PROJECT BABEL

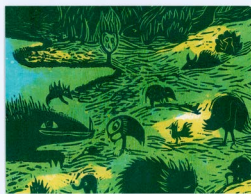
No. – Studio – Artist's name



**G11**



**G14**



**H02**



**H11**

- G01** – Atelier Imago – Alban Dreysé
- G02** – Spike Print Studio – Ivana Svabic – Cannon
- G03** – Oxford Printmakers Co-operative – Isabel Carmona
- G04** – Água-Forte Printmaking Association – Ana Galvão
- G05** – Oxford Printmakers Co-operative – Richard Stephens
- G06** – Leinster Printmaking Studio – Melissa Cherry
- G07** – Tintaentera – Jesus Molledo
- G08** – Atelier de l'Île – Olga Inés Magnano
- G09** – Água-Forte Printmaking Association – Fátima Ferreira
- G10** – Arabian Taidegraafikot – Metta Savolainen
- G11** – Água-Forte Printmaking Association – Amélia Soares
- G12** – Matriz Associação de Gravura do Porto – Mami Higuchi
- G13** – Fyns Grafiske Værksted – Vinni Elgaard
- G14** – Ratamo Printmaking Centre – Tomiyuki Sakuta
- G15** – Ålgården Borås – Malin Rolfsdotter
- G16** – Arabian Taidegraafikot – Seela Petra
- G17** – Studio Piccolo – Tarja Heilimo
- G18** – Edinburgh Printmakers Print Studio – Fiona Maher
- G19** – John Howard Print Studios – Phil Naylor

- H01** – Lahden Taidegraafikot ry – Markku Alhonen
- H02** – Hochdruckpartner – Katja Zwirrmann
- H03** – Constellation Studios – Keith Buswell
- H04** – Printstudio Foundation VR – Gotlib Nathan
- H05** – Ratamo Printmaking Centre – Mari Hallapuro
- H06** – Ratamo Printmaking Centre – Amy Sterly
- H07** – Studio Iram – Aqeel Solangi
- H08** – Lahden Taidegraafikot ry – Pekka Syrjälä
- H09** – Leinster Printmaking Studio – Bethan Hodgson
- H10** – Kellaripress Printmaking Studio – Sari Majander
- H11** – Tintaentera – Natalia Royo
- H12** – Leinster Printmaking Studio – Mary Mcgrath
- H13** – Atelier de l'Île – Jessica Tibo
- H14** – Ratamo Printmaking Centre – Jenni Niskala
- H15** – Clifton Editions – Sheena Vallely
- H16** – Spike Print Studio – Elaine Cooper
- H17** – The Society of Wood Engravers – David Moyer
- H18** – Fyns Grafiske Værksted – Marie Weber Carlsen
- H19** – Oxford Printmakers Co-operative – Kathrin Luddecke

3.-31. AUGUST 2024



[www.gallerivaldal.dk](http://www.gallerivaldal.dk)

# PROJECT BABEL

No. – Studio – Artist's name



**I03**



**I19**



**J01**



**J17**

- I01** – Spike Print Studio – Caroline Case  
**I02** – Atelier de l'Île – Marie – Claude Arnaud  
**I03** – Studio Marstähti – Tuula Moilanen  
**I04** – Studio Iram – Sadaf Mirza  
**I05** – Empreinte atelier de gravure – Pablo Quert  
**I06** – Slaughterhaus Print Studio – Sarah Prail  
**I07** – Ratamo Printmaking Centre – Lars Holmström  
**I08** – John Howard Print Studios – Sally Spens  
**I09** – Água-Forte Printmaking Association – Tereza Morgado  
**I10** – John Howard Print Studios – John Howard  
**I11** – Galleria Taller Gravura – Javier Roz  
**I12** – Oxford Printmakers Co-operative – Gill Salway  
**I13** – Leinster Printmaking Studio – Mir Fitzgerald  
**I14** – Atelier de l'Île – Marie Daoust  
**I15** – Slaughterhaus Print Studio – Ruth Tovim  
**I16** – Oxford Printmakers Co-operative – Jackie Conway  
**I17** – Studio Iram – Osman Hyder  
**I18** – Ratamo Printmaking Centre – Roberta Vaigeltaité-V.  
**I19** – Lapaluodon grafikanpaja – Raija Korppila
- J01** – Fyns Grafiske Værksted – Elsbeth Burgwald Thostrup  
**J02** – Ratamo Printmaking Centre – Borja Moreno  
**J03** – Estudio Fabiola Gil – Laura Martínez Sinovas  
**J04** – Slaughterhaus Print Studio – Rob White  
**J05** – Oxford Printmakers Co-operative – Mary Jane Pearce  
**J06** – Ålgården Borås – Vero Olsson  
**J07** – Ålgården Borås – Linn Sundqvist  
**J08** – Ratamo Printmaking Centre – Janne Laine  
**J09** – Slaughterhaus – Emilia Dominguez  
**J10** – Spike Print Studio – Amy Hutchings  
**J11** – Ratamo Printmaking Centre – Päivi Somppi  
**J12** – Constellation Studios – Joslyn Andreason  
**J13** – Atelier Genevois de Gravure Contemporaine – Pablo Osorio  
**J14** – Oxford Printmakers Co-operative – Kassandra Isaacson  
**J15** – Printstudio Foundation VR – Van den Heuvel Hilde  
**J16** – Spike Print Studio – Jess Bugler  
**J17** – Tolstrup Pryds Grafisk – Gina Hedegaard Nielsen  
**J18** – Fyns Grafiske Værksted – Elsemarie Albrecht  
**J19** – Fyns Grafiske Værksted – Mogens Jessing

3.-31. AUGUST 2024



[www.gallerivaldal.dk](http://www.gallerivaldal.dk)

# PROJECT BABEL

No. – Studio – Artist's name



**K07**



**K16**



**L03**



**L11**

- K01** – Vargas Print Studio – Rita Vargas
- K02** – Leinster Printmaking Studio – Michele Sweetman
- K03** – Art Print Residence – Neus Soler
- K04** – Ratamo Printmaking Centre – Sirkku Ketola
- K05** – Blank
- K06** – Ratamo Printmaking Centre – Dean Dass
- K07** – Art Print Residence – Eduard Huertos
- K08** – Atelier de l'Île – Ginette Piché
- K09** – Slaughterhaus Print Studio – Christine Hirsch – Wilton
- K10** – Studio Iram – Mah Misha Fatima
- K11** – Água-Forte Printmaking Association – Palmira Pires
- K12** – Água-Forte Printmaking Association – Manuel Lopes
- K13** – Empreinte atelier de gravure – Yvonne Simon
- K14** – Lahden Taidegraafikot ry – Tiina Salmi
- K15** – Blank
- K16** – Matriz Associação de Gravura do Porto – Julia Pintão
- K17** – Leinster Printmaking Studio – Margaret Becker
- K18** – John Howard Print Studios – Clementine Neild
- K19** – Blank

- L01** – Ratamo Printmaking Centre – Cléa Darnaud
- L02** – Blank
- L03** – Art Print Residence – Joan Ramon Cabús
- L04** – Slaughterhaus Print Studio – Nilofar Akmut
- L05** – Oxford Printmakers Co-operative – Biddy Hudson
- L06** – Studio Iram – Beenish Khalid
- L07** – Blank
- L08** – Ratamo Printmaking Centre – Juho Karjalainen
- L09** – Blank
- L10** – Leinster Printmaking Studio – Jo Howard
- L11** – Tolstrup Pryds Grafisk – Claudio Bannwart
- L12** – Lahden Taidegraafikot ry – Susanna Judin
- L13** – Printstudio Foundation VR – Daeleman Sarah
- L14** – Tolstrup Pryds Grafisk – Karen Brandt
- L15** – Hochdruckpartner – Harald Alff
- L16** – Arabian Taidegraafikot – Teija Immonen
- L17** – Studio Iram – Iram Wani
- L18** – Korsør Grafiske Værksted – Nancy Saks
- L19** – Empreinte atelier de gravure – Asta Kulikauskaité – Krivickiené

3.-31. AUGUST 2024



[www.gallerivaldal.dk](http://www.gallerivaldal.dk)



# PROJECT BABEL

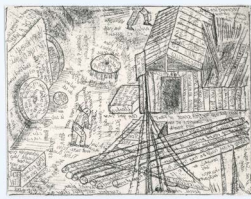
No. – Studio – Artist's name



**M01**



**M10**



**M17**



**N08**

- M01** – Studio Shopen – Feodor Brodski  
**M02** – Fyns Grafiske Værksted – Linka Hedsbjerg  
**M03** – Slaughterhaus Print Studio – Helen Breach  
**M04** – Spike Print Studio – Jess Townsend  
**M05** – Tolstrup Pryds Grafisk – Parul Modha  
**M06** – Atelier de l'Île – Cédric St – Jean  
**M07** – Lahden Taidegraafikot ry – Eila Weckman  
**M08** – Ratamo Printmaking Centre – Noora Tervakoski  
**M09** – Galleria Taller Gravura – Eryk Pall  
**M10** – Estudio Fabiola Gil – Laura Hettler  
**M11** – Ratamo Printmaking Centre – Annika Heinonen  
**M12** – Atelier Imago – Adélie Devaux  
**M13** – Ratamo Printmaking Centre – Kęstutis Vasiliūnas  
**M14** – Tolstrup Pryds Grafisk – Eva Carstensen  
**M15** – Oxford Printmakers Co-operative – Nik Stanbridge  
**M16** – Ratamo Printmaking Centre – Yuki Nagashima  
**M17** – Empreinte atelier de gravure – Diane Jodes  
**M18** – Ratamo Printmaking Centre – Ismo Vuorela  
**M19** – Leinster Printmaking Studio – Katherine Smits
- N01** – The Society of Wood Engravers – Roy Willingham  
**N02** – Leinster Printmaking Studio – Pamela De Brí  
**N03** – Black Box – Davide Ubaldini  
**N04** – Arabian Taidegraafikot – Vappu Johansson  
**N05** – Atelier de l'Île – Odette Pinard  
**N06** – Slaughterhaus Print Studio – Valeria Pilloni  
**N07** – The Society of Wood Engravers – Anne Desmet Ra  
**N08** – Fyns Grafiske Værksted – Per Nielsen  
**N09** – Blank  
**N10** – Ålgården Borås – Thomas Carlund  
**N11** – Fyns Grafiske Værksted – Malone Dietrich  
**N12** – Fyns Grafiske Værksted – Annette Kampmann Ilfeldt  
**N13** – Black Box – Vito Adamo  
**N14** – Arabian Taidegraafikot – Taina Kokkonen  
**N15** – Studio Iram – Mehrbano Khattak  
**N16** – Spike Print Studio – Emily Ketteringham  
**N17** – Ratamo Printmaking Centre – Tanuja Rane Hambardikar  
**N18** – Tolstrup Pryds Grafisk – Charlotte Binau  
**N19** – Ratamo Printmaking Centre – Pirjo Luoma

3.-31. AUGUST 2024



[www.gallerivaldal.dk](http://www.gallerivaldal.dk)

# PROJECT BABEL

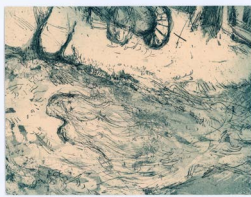
No. – Studio – Artist's name



**O01**



**O02**



**O12**



**P01**

- O01** – Art Print Residence – Ariadna Abadal
- O02** – Tolstrup Pryds Grafisk – Palle Rud Christoffersen
- O03** – Helsinki Litho – Matti Hintikka
- O04** – Fyns Grafiske Værksted – Patricia Delgado
- O05** – Fyns Grafiske Værksted – Katja Herrik
- O06** – Oxford Printmakers Co-operative – Karen Morecroft
- O07** – Oxford Printmakers Co-operative – Charlie Lee Potter
- O08** – Fyns Grafiske Værksted – Merete Bartholdy
- O09** – Oxford Printmakers Co-operative – Helen Ganly
- O10** – Slaughterhaus Print Studio – Katy Tee
- O11** – Ratamo Printmaking Centre – Natalie Hamada
- O12** – Edinburgh Printmakers Print Studio – Nicola Weir
- O13** – Studio Iram – Saima Salahuddin
- O14** – Água-Forte Printmaking Association – Maria Manuel Lira
- O15** – Lahden Taidegraafikot ry – Eeva Jauhiainen
- O16** – Tolstrup Pryds Grafisk – Inga Vestergaard Sørensen
- O17** – Slaughterhaus – Alejandro M. Sanz
- O18** – Oxford Printmakers Co-operative – Rahima Kenner
- O19** – Ratamo Printmaking Centre – Joana Kairiené
  
- P01** – Studio Piccolo – Juha Välimäki
- P02** – Leinster Printmaking Studio – Deirdre Shanley
- P03** – Ratamo Printmaking Centre – Dominic Fee
- P04** – Slaughterhaus Print Studio – Lucy Annan
- P05** – Studio Iram – Zaira Ahmad Zaka
- P06** – Fyns Grafiske Værksted – Inge Marie Mørcke
- P07** – Lahden Taidegraafikot ry – Jaana Paulus
- P08** – Ratamo Printmaking Centre – Emma Lappalainen
- P09** – Ratamo Printmaking Centre – Junji Yamada
- P10** – Leinster Printmaking Studio – Val Hennigan
- P11** – Oxford Printmakers Co-operative – Maria Maldonado
- P12** – Slaughterhaus Print Studio – Alex Le Fevre
- P13** – Leinster Printmaking Studio – Hilary Kinahan
- P14** – Estudio Fabiola Gil – Marta Gómez Izquierdo
- P15** – Studio Iram – Shahbano Kazmi
- P16** – Studio Iram – Rashda Faridi
- P17** – Estudio Fabiola Gil – Fabiola Gil Alares
- P18** – Slaughterhaus Print Studio – Fiona Stephen
- P19** – Tolstrup Pryds Grafisk – Mette Rix

3.-31. AUGUST 2024



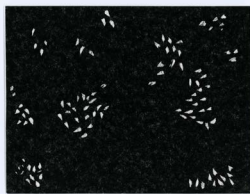
[www.gallerivaldal.dk](http://www.gallerivaldal.dk)

# PROJECT BABEL

No. – Studio – Artist's name



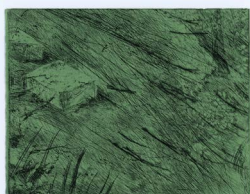
**Q03**



**Q10**



**R12**



**R13**

- Q01** – Fyns Grafiske Værksted – Pernille Andersen
- Q02** – Edinburgh Printmakers Print Studio – Mary Walters
- Q03** – Atelier de l'Île – Louise Bariteau
- Q04** – Lahden Taidegraafikot ry – Sirpa Lappalainen
- Q05** – Printstudio Foundation VR – Ardui Henri
- Q06** – Ratamo Printmaking Centre – Pekka Kuikka
- Q07** – Studio Iram – Shaheera Mughal
- Q08** – Slaughterhaus Print Studio – Claire Willberg
- Q09** – Ratamo Printmaking Centre – Maija Albrecht
- Q10** – Tolstrup Pryds Grafisk – Lisbeth Tolstrup
- Q11** – Matriz Associação de Gravura do Porto – Najla Leroy
- Q12** – Slaughterhaus Print Studio – Skyler Yixian Lin
- Q13** – Lapaluodon grafiikanpaja – Juha Laakso
- Q14** – Água-Forte Printmaking Association – Madalena Fonseca
- Q15** – Empreinte atelier de gravure – Patricia Wohl
- Q16** – Ratamo Printmaking Centre – Miina Laine
- Q17** – Água-Forte Printmaking Association – Margarida Lourenço
- Q18** – Slaughterhaus Print Studio – Sarah Gursoy-Heuser
- Q19** – Blank

- R01** – Edinburgh Printmakers Print Studio – Cat Outram
- R02** – Art Print Residence – Teofil Androne
- R03** – Slaughterhaus Print Studio – SooMin Leong
- R04** – Fyns Grafiske Værksted – Anne Grarup
- R05** – Ratamo Printmaking Centre – Harri Taskinen
- R06** – Ratamo Printmaking Centre – Dominik Wlodarek
- R07** – Studio Iram – Siebel Sohail
- R08** – Edinburgh Printmakers Print Studio – Rona MacLean
- R09** – Edinburgh Printmakers Print Studio – June August
- R10** – Edinburgh Printmakers Print Studio – Irene Narbutt
- R11** – Leinster Printmaking Studio – Sylvia Hemmingway
- R12** – Clifton Editions – John White
- R13** – Ratamo Printmaking Centre – Elisa Pellizzari
- R14** – Oxford Printmakers Co-operative – Catriona Brodribb
- R15** – Edinburgh Printmakers Print Studio – Robert Powell
- R16** – Ratamo Printmaking Centre – Stephen Lawlor
- R17** – Studio Iram – Nadia Rahat
- R18** – Fyns Grafiske Værksted – Sten Fjordside
- R19** – The Society of Wood Engravers – Louise Hayward

3.-31. AUGUST 2024



[www.gallerivaldal.dk](http://www.gallerivaldal.dk)

# PROJECT BABEL



3.-31. AUGUST 2024



[www.gallerivaldal.dk](http://www.gallerivaldal.dk)